

Programme 4Op

Peter Whelan

# THE ACCRINGTON PALS



---

## About the play . . . . .

Although tonight's play tells the heartwarming, funny and very human story of a battalion, 'The Accrington Pals', in World War One, it is really more concerned with those left at home to wait.

Set in Lancashire, the play was actually written by a distinguished Staffordshire playwright, Peter Whelan.

First performed by the Royal Shakespeare Company at the Warehouse, London, on 10th April, 1981, 'The Accrington Pals' has all the elements of good theatre: honest characterisation, a strong storyline, true-to-life dialogue and an abundance of natural humour.

T.W.

---

### ACKNOWLEDGEMENTS

Costumes for 'The Accrington Pals' supplied by  
**MIDLAND COSTUME (Stoke-on-Trent) LTD.**

**NIDA PRODUCTS, Trentham**  
for items of furniture for our previous production,  
'Breezeblock Park'

Specialist Wardrobe Care and Dry-cleaning for the Repertory Theatre  
courtesy of  
**Central Cleaners, 163, Hamil Road, Burslem.**

Administration for the Repertory Theatre kindly sponsored by  
**Lindsay Advertising**  
**Hallfield Buildings, Festing Street, Hanley.**

**WE ARE INDEBTED TO THE ST. JOHN AMBULANCE BRIGADE,  
WHOSE MEMBERS VOLUNTARILY ATTEND ALL OUR  
PUBLIC PERFORMANCES.**

---

## Stoke-on-Trent Repertory Theatre

present  
by special arrangement with Samuel French, Inc.

# The Accrington Pals

by Peter Whelan

**30th January - 3rd February**  
and  
**6th - 10th February, 1990**

THE PLAY DIRECTED BY  
**TED WATKINS**

ORIGINAL SETTING DESIGNED BY ADAM SLINGSBY

ADAPTED FOR THE REPERTORY THEATRE BY  
BRIAN P. HADLEY

SCENIC DESIGN REALISED BY COLIN CHESTERTON

# THE ACCRINGTON PALS

a play by PETER WHELAN

## CAST

in order of appearance

First Soldier.....	ANDREW BELL
Tom Hackford.....	HOWARD GOODALL
May Hassal.....	ALISON TOWNSEND
Arthur Boggis.....	DAVID FINN
Reggie Boggis.....	JOHN K. COLLIER
Annie Boggis.....	SHELLEY RIDDELL
Ralph.....	NIGEL HUGHES
Eva Mason.....	ROSEMARY HULME
Sarah Harding.....	DEBBIE MOUAT
Bertha Treecott.....	BEVERLEY HALFPENNY
C.S.M. Rivers.....	LOUIS SASSI

*The action of the play takes place between Autumn 1914 and July 1916.*

*The background is reality. The 'Accrington Pals' battalion of Kitchener's new army was raised and destroyed as described in the play.*

*The performance is in two parts, with one twenty-minute interval.*

## PRODUCTION TEAM

General Stage Manager.....	RICHARD MASTERS
Stage Manager (for 'The Accrington Pals').	GRAHAM MOUAT
Master Carpenters.....	JOHN SHENTON DAVID BRYAN
Assistant Stage Managers.....	NICK BLOOR SIÂN DAVIES BILL HANCOCK JAN JOHNSON
Lighting Technicians.....	STUART CAMPBELL TINA CAMPBELL
Sound Technician.....	MARTIN ALLSOP
Properties.....	JOAN HUTSON DEBBIE ROWLEY
Wardrobe Mistress.....	ALISON TOWNSEND
Music Adviser.....	TED DUTTON
Company Photographer.....	PETER CROFT
Front of House Managers.....	JOHN WOOD ANDREW MORREY
Box Office Managers.....	ROY HOLLAND STELLA WOOLSCROFT
Theatre Bar Manager.....	GORDON TOON
Art Exhibition Co-ordinator.....	PAUL M. CLARKE
Programme.....	MADELEINE POTTINGER

**Smoking is no longer permitted in the auditorium**

**PRESS STONE LTD**

**COLOUR REPRODUCTION  
SALES LITERATURE  
MAGAZINES & BOOKLETS  
BUSINESS STATIONERY  
THEATRE PROGRAMMES**

**1 Newcastle Street, Stone, Staffs. ST15 8JU.**  
**Telephone (0785) 815110**



The Caring Society

*All the family will  
appreciate  
our interest.*

Whether you're looking for a home for your money or money for a home, there are a number of things about the Hanley Economic you will appreciate.

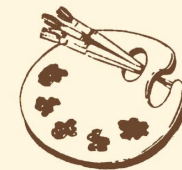
Firstly, we're a building society, pure and simple.

Secondly, that means we're in the business of helping people like you build a prosperous future for their families — as we've been doing since 1854.

Thirdly, you won't be pushed into something you don't wish to have. We'll simply advise you what's best for you.

Why not discover more interesting facts about Hanley Economic's family of investors. Contact your nearest branch or agency now.

**John K. Collier**



Born locally, John attended Endensor High School and the Stoke-on-Trent 6th Form College, Fenton. He is now in his final year of a B.A. Creative Arts Degree at Crewe and Alsager College of Higher Education, studying Drama and Art.

A Rep member for five years, John has a strong interest in acting and set design, and also enjoys photography and creating computer-enhanced images.

# THE STEVEN COOKE APPEAL

You will recall that during our last show, 'Breezeblock Park', our theatre staff arranged a collection in support of the above appeal for Steven Cooke, the little two-year old local boy who suffered 55% burns in a recent accident.

We can now tell you that the amount raised, including a donation from the theatre, was £150, a cheque for which has been forwarded to the fund's trustees.

On behalf of Steven Cooke,

## Thank you

The Steven Cooke Fund, c/o Mr. F. L. Clarke & Mr. R. G. Platt,  
6, Ennerdale Close, Dalehall, Burslem, Stoke-on-Trent. ST6 4JN

**May we please bring to your attention**

the 'NO SMOKING' ruling applying in the auditorium as from this season.

We have to point out that this is a **LEGAL REQUIREMENT** which must be observed, please, at all times if we are to retain our Theatre Licence.

# REP Flash

Gilbert & Sullivan fans  
**WATCH THIS SPACE!**

Branches and agents throughout Staffordshire and South Cheshire.

# THE REP

Stoke-on-Trent Repertory Theatre,  
College Road, Shelton, Stoke-on Trent. ST4 2EX  
Telephone (0782) 44784

## 1989/1990

---

### FALLEN ANGELS

**17 - 28 October, 1989**

*Noel Coward at his sparkling best!*

Box Office open from 4 p.m. Wednesday, 11th October, 1989

### BREEZEBLOCK PARK

**5 - 16 December, 1989**

*Willy Russell's light comedy about a family at Christmas.*

Box Office open from 4 p.m. Wednesday, 29th November, 1989

### CHRISTMAS AT THE REP

**Saturday, 23rd December, 1989**

### THE ACCRINGTON PALS

**30 January - 10 February, 1990**

*Peter Whelan's bitter-sweet picture of civilian life during wartime.*

Box Office open from 4 p.m. Wednesday, 24th January, 1990

### A VIEW FROM THE BRIDGE

**27 March - 7 April, 1990**

*Arthur Miller's enthralling American drama of Sicilian family jealousy and passion.*

Box Office open from 4 p.m. Wednesday, 21st March, 1990

### THE FARNDALE AVENUE HOUSING ESTATE TOWNSWOMEN'S GUILD DRAMATIC SOCIETY'S PRODUCTION OF MACBETH

**22 May - 2 June, 1990**

*McGillivray and Zerlin's uproarious, hilarious, frantic farce introducing the intrepid ladies of the F.A.H.E.T.G. Dramatic Society - and friends!*

Box Office open from 4 p.m. Wednesday, 16th May, 1990

---

## BOX OFFICE

**OPENS**

**4.00 p.m.**

**TELEPHONE**

**44784**

**CLOSES**

**7.00 p.m.**

**FOR TELEPHONE BOOKINGS**